

# TELY QUICK REFERENCE CARD

## PROJECTING LAPTOP CONTENT ON SCREEN

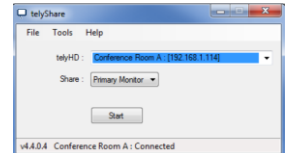
### A) USING HDMI CABLE:

- Connect the HDMI cable to your laptop
- A “Device detected on HDMI input. Do you wish to share now?” window will appear
- Select “Yes” and press “Enter” on remote control to project desktop onto the screen



### B) USING TELYSHARE APPLICATION:

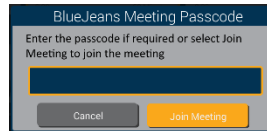
- Launch telyShare application on your laptop or if it is already running, you can find it in the system tray
- Select your Tely from the list or enter the IP address shown on the bottom right corner of the Tely screen
- Click start to project your desktop



## CONNECTING TO YOUR SCHEDULED MEETING

### A) ON SCREEN “UPCOMING EVENTS” CALENDAR LISTS SCHEDULED MEETINGS

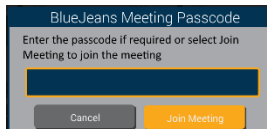
- Select your scheduled meeting from the calendar and press “Enter” on the remote control
- Enter the passcode if required or select “Join Meeting” and press “Enter” on remote control to start meeting



## CONNECTING TO YOUR UNSCHEDULED OR AD-HOC MEETING

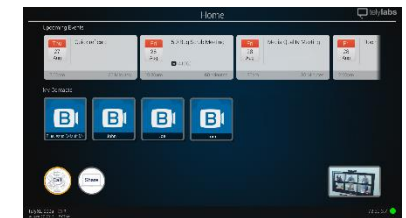
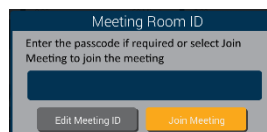
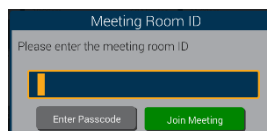
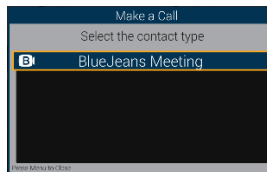
### A) ON SCREEN “MY CONTACTS” LISTS THE CONTACT CARDS SAVED

- Select the desired contact card and press “Enter” on the remote control
- Enter the passcode if required or select “Join Meeting” and press “Enter” on remote control to start meeting



### B) ON SCREEN “CALL” CIRCLE

- Select the “Call” circle and press “Enter” on the remote control
- Press “Enter” on the remote control to accept “BlueJeans Meeting”
- Enter the Meeting Room ID
- Select “Enter Passcode” to enter passcode or select “Join Meeting” if no passcode is required, and press “Enter” on remote control
- If passcode required, enter it in this window, select “Join Meeting”, and press “Enter” on remote control



## SHARING YOUR LAPTOP CONTENT DURING A VIDEO CONFERENCE

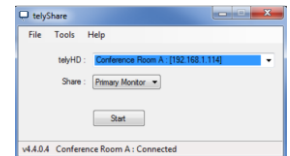
### A) USING HDMI CABLE:

- Connect the HDMI cable to your laptop
- A “Device detected on HDMI input. Do you wish to share now?” window will appear
- Select “Yes” and press “Enter” on remote control to share desktop



### B) USING TELYSHARE APPLICATION:

- Launch telyShare application on your laptop or if it is already running, you can find it in the system tray
- Select you Tely from the list or enter the IP address shown on the bottom right corner of the Tely screen
- Click start to share your desktop



## TIPS FOR A SUCCESSFUL MEETING

### A) CAMERA CONTROL

- Select the camera preview window on the bottom right corner of the screen
- Press “Enter” on the remote control
- The camera settings screen will appear
- Select “Pan/Tilt/Zoom” on the settings overlay and press “Enter”
- Make the desired zoom, pan, or tilt selection with the remote control
- NOTE: You first must zoom before you can pan or tilt

