

# SHARP

Be Original.

## 8M-B120C

120" Class (120" diagonal)  
8K Ultra-HD Professional LCD Monitor

**All-Enveloping Realism**  
**8K Ultra-HD Quality Takes you to Another World**



**8K**  
7680 × 4320 Pixels



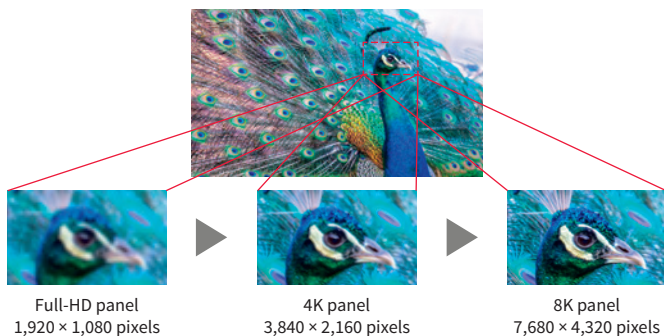
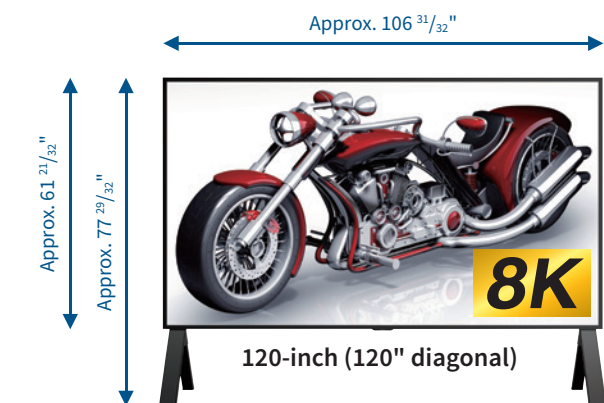
# Lifelike 8K for Brighter, Livelier Big-Screen Images



## 120-inch 8K LCD—One of The World's Largest\*

To deliver unparalleled detail, 8K packs in 33 million pixels—four times what you get on a 4K panel. The combination of 8K ultra-high resolution and a mammoth 120-inch (120" diagonal) panel creates an incredibly immersive effect—putting you right inside the scene.

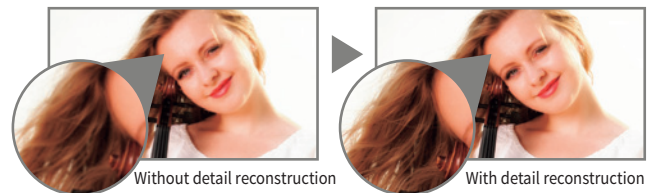
\*For an 8K LCD monitor, as of July 29, 2020; based on Sharp research.



Note: Photos pictorially illustrate differences in resolution.

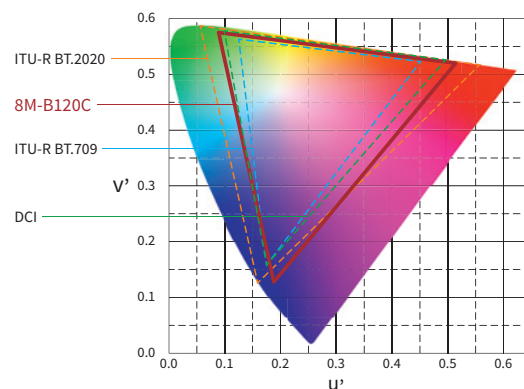
## 4K and Full-HD Upscaled to 8K

Sharp's super-resolution technology analyzes video signals to work out the details that are inherent in the original subject and reconstructs minute details. This enables 4K and full-HD content to be upscaled to look like 8K. You get clear, ultra-high-resolution images.



## One Billion Colors for Exceptional Vividness

The 8K display employs a wide-color-gamut color filter and optimized LED backlight phosphors. This allows the display to reproduce a rich color gamut (ITU-R BT.2020). You'll see improved reproduction of reds—a tell-tale measure of vividness—and improved gradations of red, blue and green in the pixels. The rich color palette of an 8K monitor adds depth to content and brings the entire screen to life.



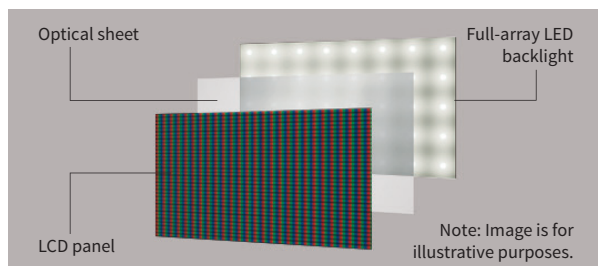




Note: 16-hour continuous operation

## Area-Divided Full-Array LED Backlight

The backlight's LEDs sit behind the LCD panel in 2,048 uniform areas. The brightness of the LEDs is controlled independently for each of these areas. Light and dark areas are more distinct and contrast is improved to deliver lifelike images.



## Multi-Screen and Other Display Modes

Content in resolutions up to 4K can be enlarged and upscaled to 8K by the LCD monitor. It can also connect to four PCs via video cables to show content from the PCs on one large screen (a 2 × 2 split screen). You can also choose where to show each image on the screen or display them in a size of your choice.



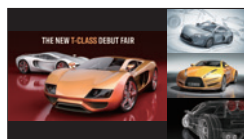
Mode 1 displays enlarged content in up to 4K resolution (upscaled to 8K)



Mode 2 shows four 4K images to display in 8K resolution



Mode 3 displays four different images (multi-screen)



Mode 4 displays four different images in varying sizes (flexible multi-screen)

## HDR\* For Truly Realistic Depth and Texture

The LCD monitor's image-processing engine restores the wide luminance data recorded in the HDR (High Dynamic Range) standard. Images are then optimally displayed on the high-contrast, low-reflection LCD panel, reproduced with a realistic sense of depth and texture.

\*A technology to expand the luminance data contained in the image to make it even more realistic.



## Easy Connection via a Single HDMI™ Cable\*

The LCD monitor supports 8K60p/4K120p input via a single HDMI cable.

\*Supports 7,680 × 4,320p 60 Hz and 3,840 × 2,160p 120 Hz, as per the HDMI 2.1 specifications.

## Command Control via PC

The LCD monitor has a LAN port that lets you control the monitor from a remote PC. You can turn the power on and off, change inputs and more.

## Flexible Installation

The LCD monitor comes bundled with a floor stand and wall-mounting brackets—no need for extra hardware\*. Eyebolts are provided on the LCD monitor, so you can move the monitor using a crane or other lifting device.

\*Certain installation locations may require additional hardware. Installation costs are not included in the product price. For conditions applying to installation, please consult with your local authorized Sharp dealer or representative before purchase. Also be sure to check for safety (such as wall strength) before installing.



## Specifications

Model Name		8M-B120C
Installation		Landscape
LCD Panel	120-inch class (120-inch diagonal) UV2A*1 LCD	
	Backlight	Full-array LED
	Max. Resolution	7,680 × 4,320 pixels
	Max. Display Colors (approx.)	1.07 billion colors
	Pixel Pitch (H × V)	0.346 × 0.346 mm
	Brightness*2	Up to 600 cd/m <sup>2</sup> (HDR: peak 1,500 cd/m <sup>2</sup> ) when connected to a 200-240VAC power source Up to 300cd/m <sup>2</sup> when connected to a 100-120VAC power source
	Contrast Ratio	3,500:1
	Viewing Angle (H/V)	176°/176° (CR ≥10)
	Active Screen Area (W × H)	104 5/8" × 58 27/32"
	Response Time	6 ms (grey to grey, avg.)
Computer Input	Video	Analog RGB (0.7 Vp-p) [75Ω], HDMI compliant
	Synchronisation	Horizontal/vertical separation (TTL: positive/negative)
	Plug & Play	VESA DDC2B
Input Terminals*3		HDMI: (INPUT 1: HDR [PQ/HLG] compatible, INPUT 2: ARC compatible) × 4 HDMI (for 8K): (INPUT 7: HDR [PQ/HLG] compatible, HDMI × 4) × 1 HDMI (for 8K): (INPUT 8: HDR [PQ/HLG] compatible, HDMI × 1) × 1*4 PC analog: Mini D-sub 15-pin × 1; USB (photos, video, music) × 2; 3.5 mm-diameter mini stereo jack (video/analog audio) × 1*5
Output Terminals*3		Digital audio (optical) × 1; 3.5 mm-diameter mini stereo jack (analog audio) × 1; headphones × 1
Input/Output Terminals*3		LAN port (10Base-T/100Base-TX) × 1
Speaker Output		70 W (10 W + 10 W + 10 W + 10 W + 15 W + 15 W)
Mounting		8 points; pitch: 800 × 800 mm, 800 × 400 mm; M8 screw
Power Supply		100-120VAC 50/60Hz or 200-240VAC 50/60Hz depending upon line voltage and power cord being used
Continuous Operation		16 hours
Power Consumption		1,000W (standby 0.5W) for 100-120VAC or 1520W (standby 0.5W) for 200-240VAC
Environmental Conditions	Operating Temperature*6	32°F to 104°F
	Operating Humidity	20% to 80% RH (no condensation)
Dimensions (W × D × H (approx.) (not including protrusions))	Display Only	106 31/32" × 6 13/16" × 61 21/32"
	With Floor Stand	106 31/32" × 31 11/16" × 77 29/32"
Weight (approx.) (not including protrusions)	Display Only	412.3 lbs
	With Floor Stand	454.2 lbs
Main Accessories		200 V AC power cord (3 meters, 3-pin*7), 100 V AC power cord (3 meters, 3-pin*7), AV connector conversion cable, remote control unit, battery (AAA size) × 2, set-up manual, cable clamp × 5, floor stand, wall-mounting brackets, eyebolt cover and screws for eyebolt cover (2 sets)

\*1: UV2A stands for Ultraviolet-induced Multi-domain Vertical Alignment, a photo-alignment technology that ensures uniform alignment of liquid crystal molecules. \*2: Brightness level will decrease slightly over the lifetime of the product. Due to the physical limitations of the equipment, it is not possible to maintain a precisely constant level of brightness. \*3: Use a commercially available connection cable for PC and other video connections. \*4: Supports input via one HDMI cable (7,680 × 4,320p 60 Hz and 3,840 × 2,160p 120 Hz, as per the HDMI 2.1 specifications.) \*5: The terminal is shared with both video and analog audio. For video input, used the bundled conversion cable. \*6: Temperature conditions may change when using the monitor together with optional equipment. In such cases, check the temperature conditions specified by the optional equipment. Also, the operating temperature range may change depending on installation conditions. \*7: Use a 3-pin compatible power outlet.

### Compatible Signal Timing (PC)

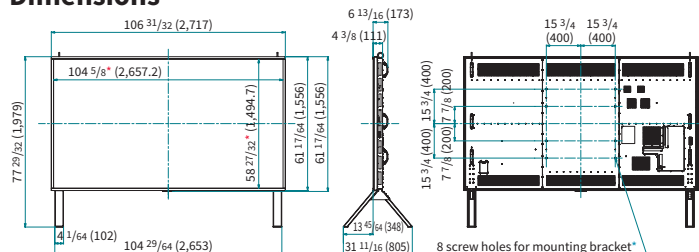
Screen Resolution		Horizontal Frequency	Vertical Frequency	HDMI			
				INPUT 1	INPUT 2/3/4	INPUT 7	INPUT 8
4K	3,840 × 2,160	54.0 kHz	24 Hz	●	●	●	●
		56.3 kHz	25 Hz	●	●	●	●
		67.5 kHz	30 Hz	●	●	●	●
		112.5 kHz	50 Hz	●	●	●	●
		135.0 kHz	60 Hz	●	●	●	●
8K	7,680 × 4,320	108.0 kHz	24 Hz	—	—	●*1*2	●
		110.0 kHz	25 Hz	—	—	●*1*2	●
		132.0 kHz	30 Hz	—	—	●*1*2	●
		220.0 kHz	50 Hz	—	—	●*1*2	●
		264.0 kHz	60 Hz	—	—	●*1*2	●

### Compatible Signal Timing (AV)

Screen Resolution		Frequency	HDMI			
			INPUT 1	INPUT 2/3/4	INPUT 7	INPUT 8
4K	3,840 × 2,160	24 Hz	●	●	●	●
		25 Hz	●	●	●	●
		29.97 Hz	●	●	●	●
		30 Hz	●	●	●	●
		50 Hz	●	●	●	●
		59.94 Hz	●	●	●	●
		60 Hz	●	●	●	●
8K	7,680 × 4,320	50 Hz	—	—	●*1*2	●
		59.94 Hz	—	—	●*1*2	●
		60 Hz	—	—	●*1*2	●

\*1: Uses Mode 2 display mode. \*2: Input 7's A to D connectors each support input signals of 3,840 × 2,160 resolution.

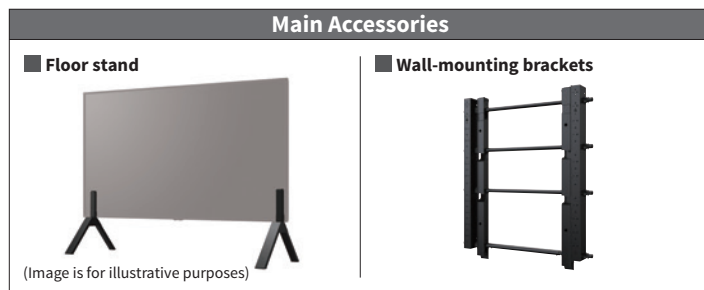
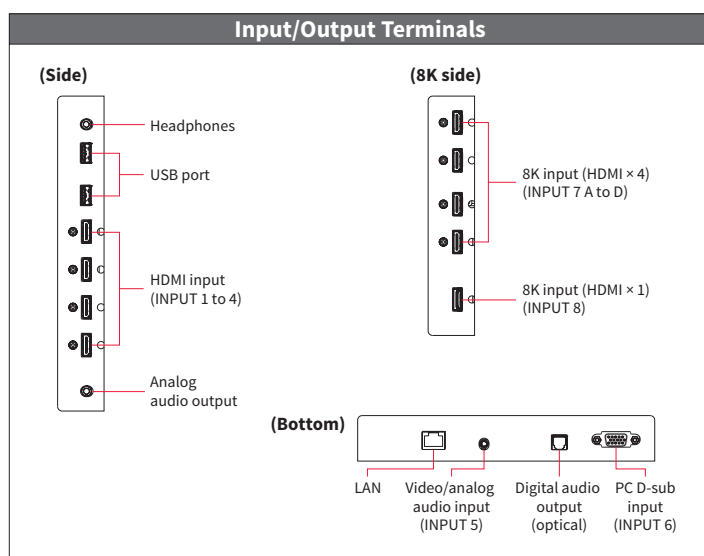
## Dimensions



Units: inch (mm)

\* Screen dimensions

\* To use the mounting bracket, use M8 screws that are 8 to 10 mm plus the thickness of the bracket.



**HDMI**™  
HIGH-DEFINITION MULTIMEDIA INTERFACE

**DOLBY AUDIO**™

**SHARP**®

©2020 Sharp Electronics Corporation. All rights reserved.

SHARP ELECTRONICS CORPORATION  
100 Paragon Drive, Montvale, NJ 07645  
1-800-BE-SHARP • www.sharpsusa.com

09/20 Printed in the U.S. PDD-20106

Sharp is a registered trademark of Sharp Corporation. The terms HDMI, HDMI High-Definition Multimedia Interface, and the HDMI Logo are trademarks or registered trademarks of HDMI Licensing Administrator, Inc. Dolby, Dolby Audio, and the double-D symbol are trademarks of Dolby Laboratories. All other brand names and product names may be trademarks or registered trademarks of their respective owners. All screen images appearing in this brochure are simulated. Design and specifications are subject to change without prior notice.





8M-B80AX1U

80" Class (80.5" diagonal) 8K Ultra-HD LCD display





# Making the invisible visible.

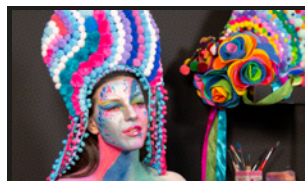
Clearly see every little detail like never before with the best 8K professional display on the market.

The 8M-B80AX1U 8K 80" Class (80.5" diagonal) 8K LCD display is the second generation of professional 8K displays from Sharp. At the very leading edge of the pro-display market, it allows high-end professional users to enjoy the ultimate in image precision and clarity. Its 8K 7,680 x 4,320 screen provides an exponential step up in terms of image detail with 16x the pixel resolution of Full-HD 1,920 x 1,080 (or 4x the pixel resolution of 4K 3,840 x 2,160).

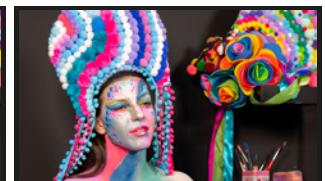
Rather than simply upscaling content, like other 8K displays, it is a key component of Sharp's end-to-end 8K ecosystem. Displaying native 8K content dramatically improves the picture quality, providing lifelike images. So it raises the bar significantly for business environments that depend on exceptional detail, such as design studios, TV broadcasters and traffic control rooms.

## Brilliantly realistic

As well as providing twice the brightness of first generation Sharp professional 8K displays, with 800 cd/m<sup>2</sup> (or up to 4,000 cd/m<sup>2</sup> Peak Level), the 8M-B80AX1U HDR (High Dynamic Range) technology also expands the contrast and color range significantly. It means that the bright parts of an image get brighter, adding greater depth, and colors are more saturated and natural-looking. So images, films and virtual reality (VR) content look incredibly realistic, creating a more immersive experience than was ever possible before.



Display shows color gradation



Sharp 8M-B80AX1U 10-Bit Extended Color Range



More color and enhanced accuracy with 10-bit Extended Color Range

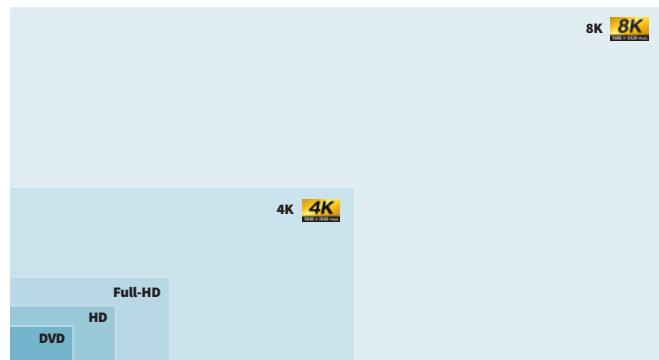




### More color, more precision

The 8M-B80AX1U's 10-Bit Extended Color Range delivers superior image realism and significantly enhanced color accuracy. It increases the range of possible color values in each pixel up to 1.07 billion colors, so images appear much more lifelike and natural. This is especially important in many manufacturing processes. For example, when designing and testing how products will look to the consumer using virtual reality, or in automotive and aerospace design when matching colors of different body panel sections. It also offers real benefits for the forensic examination of very high-resolution images, such as ancient artefacts for museum exhibits, and surveillance at large sporting events to identify individuals by their clothing.

In addition, with more than 5x more local dimming backlight zones and a much greater number of LEDs, it enables a much greater contrast level between dark and bright areas, so images are clearer and sharper. Unlike some other displays, it enables more precise control of production processes and greater realism when creating complex designs. It also provides vital extra clarity and legibility in time and information critical environments. For example, non-patient medical applications such as teaching.



8K is 16x the pixel resolution of today's Full-HD or 4x that of 4K



# Essential for high-performance business.

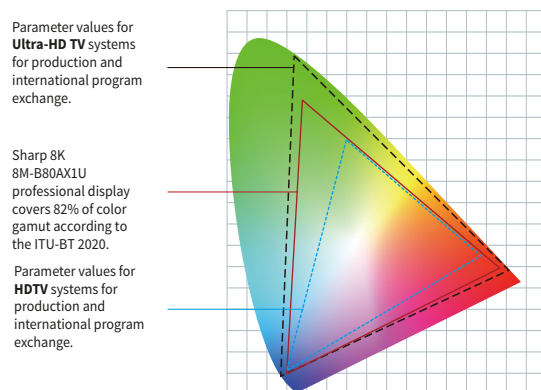
The ability to quickly create or analyze extremely precise data is critical to enhancing productivity and enabling more effective decision-making.

The 8M-B80AX1U 8K display's superior image realism, with clear colors and sharper definition, delivers significant benefits in some of the world's most data intensive business environments.

## Clearly better designs

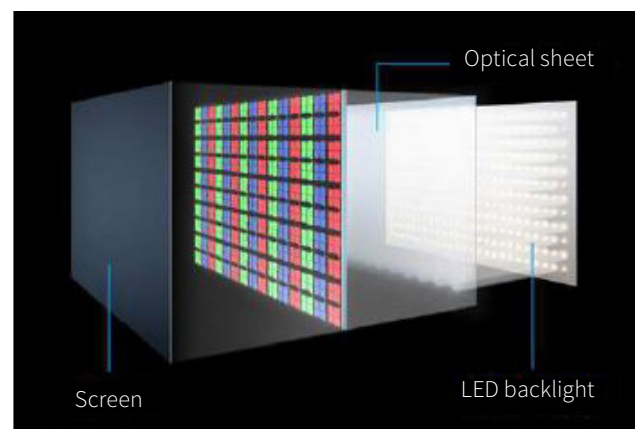
Businesses are creating increasingly sophisticated digital drawings, designs and blueprints using Computer Aided Design (CAD) or Computer Aided Manufacturing (CAM) applications. The one limiting factor has been the ability to display this information with exceptional color accuracy and contrast precision—until now.

With the 8M-B80AX1U even the most complex designs can be examined in minute detail. And its lifelike realism is also facilitating the use of virtual reality, making it much easier to assess how new products or machinery will look and perform in the real world.



## Bringing video to life

High quality video production is obviously essential in the TV and Broadcasting industry. So the 8M-B80AX1U allows businesses to edit extremely high-resolution graphics and video and create incredibly realistic content.



Extraordinary contrast delivered via Full Array LED backlighting with local dimming capability.





NASA published the first 8K video shot from the International Space Station in November 2018.<sup>2</sup>

### More detail, more control

For some professionals, the ability to track vital information can literally be a matter of life or death. So having access to reliable high-quality images can aid fast, safe decision-making. For example, in today's crowded skies, air traffic controllers need to accurately track thousand of flights that are represented by multiple lines and symbols. Surveillance operators and emergency services workers have to monitor large numbers of CCTV camera images on one screen. So the greater the resolution the less risk there is of incidents being missed or suspects escaping because their facial features are unclear. Similarly, public transport companies can monitor the movement of multiple vehicles simultaneously, so there is less confusion and possible delays.

### Fast, precise data analysis

Speed is essential in high pressure commercial environments such as energy businesses, financial centers and commodities trading floors. Every day, bankers and dealers have to rapidly digest an endless stream of graphs, images and screens full of small text. But one simple mistake in reading all of this complex information, like a missed digit, can result in potentially huge losses. So the ability to process a large amount of information, which is both clear and extremely legible, on one display not only enhances productivity, but also reduces the level of risk.

<sup>2</sup> Source: [go.nasa.gov/2qnn4fk](https://go.nasa.gov/2qnn4fk)





# Doing more with less.

Enhancing productivity is one thing. Doing it efficiently and cost-effectively is a real business bonus.

As well as unlocking new and more detailed information insights, the 8M-B80AX1U 8K display also helps businesses to reduce costs, enhance operational efficiency and work more productively.

Its 80" Class (80.5" diagonal) 8K LCD panel makes it possible to display up to 16x Full-HD 1,920x1,080 images on one screen, but even fine text and images are still crystal clear. Especially as it has:

- A static contrast ratio of 3,000:1, which maximizes image clarity and makes images appear more three dimensional, making the background more realistic and accentuating fine details.
- A 120Hz frame rate doubler, displaying up to 120 images per second, which reduces motion blur during fast panning or movement, making scenes appear more lifelike.

As a result, fewer displays are required to show the same amount of content, or even more, without sacrificing image quality. And that means less wall or room space is needed, lowering costs and enhancing operational efficiency.

*NHK (Japan Broadcasting Corporation) is moving forward with R&D on a full-featured 8K production system aiming for the 2020 Tokyo Olympic and Paralympic Games.<sup>3</sup>*





### Instantly more professional

Whatever your business needs, the 8M-B80AX1U's built-in USB Media Player ensures that you can get started immediately. It supports 4K video and 8K static images, so can display impressive images and video without the cost of buying or operating any extra equipment. As long as your content is on your USB stick, you can plug in and play instantly. You can also use the display in a standalone configuration, without any additional bulky kits and setup.

### All you need for 8K

Sharp has a vision to change the way the world is viewed, with a level of detail and realism never previously experienced. We're developing a full 8K ecosystem with a line-up of 8K solutions that will allow you to shoot, store and play all on native 8K equipment and displays.

The Sharp 8C-B60A 8K (60p) Professional Camcorder integrates capabilities for video shooting and recording, as well as playback. It also delivers line output for video streaming in 8K regardless of location. Sharp has also unveiled a compact 8K camera for future release.

So, with Sharp's support, you will be able to create your own stunning 8K images and video content, which can be easily displayed to maximum effect on the 8M-B80AX1U 8K display.

<sup>3</sup> Source: [bit.ly/2UqxH2X](https://bit.ly/2UqxH2X)



Camera is shown with third-party lens.



# Specifications

## General

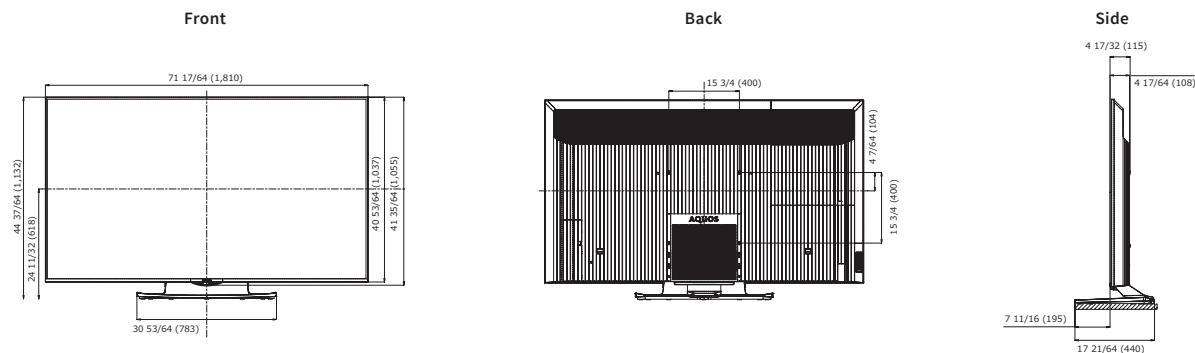
Native Resolution (Pixels)	7,860 x 4,320 @ 120Hz
Diagonal Size (inches)	80" Class (80.5" diagonal)
Aspect Ratio	16:9
Viewing angle	176°
Backlight	Direct white LED
Display Colors	10 Bit (12 Bit equivalent)
CIE1976 xy Cover Ratio vs ITU-R BT.2020	82%
HDR: PQ / HLG	Yes / Yes
Brightness (cd/m <sup>2</sup> )	800 (Peak brightness 4000)
Static contrast ratio	3,000:1
Response time in ms (grey to grey, avg.)	8
Speaker output power in W	2 x 20 + 30 Subwoofer
Input Terminals	8K:1(HDMI x4), 4K/2K: (HDMI x4), PC (Analog RGB x1), USB x2, LAN x1, Video/Audio (3.5mm x1), Audio Headphones (3.5mm x 1)
Output Terminals	Audio: Analog (3.5mm x1), Digital (optical x1)
Display Control LAN	RS232C(USB)
Operating time (daily hours / weekly days)	16/7
Operating Temperature	0 – 40°C
Operating power consumption in W	725
Standby power consumption in W (W)	0.5

## Media Player

USB player for 8K still image	JPEG (jpg) (DCF2.0-compliant)*2
USB player for 4K video	m2ts, mp4, 3gp

## Weights and Measures

Product Dimensions without Stand (W/D/H) inches	71 17/64 X 4 17/32 X 41 35/64
Product Weight without Stand (lbs.)	114.7
Mounting position	Landscape
VESA mounting (mm)	400 x 400



Units: inch (mm)



\*1 Enabled via firmware update June 2019. \*2 Brightness depends on input mode and other picture settings. Brightness level will decrease slightly over the lifetime of the product. Due to the physical limitations of the equipment, it is not possible to maintain a precisely constant level of brightness.

**SHARP**

SHARP ELECTRONICS CORPORATION  
100 Paragon Drive, Montvale, NJ 07645  
1-800-BE-SHARP • www.sharppusa.com

Sharp is a registered trademark of Sharp Corporation. The terms HDMI, HDMI High-Definition Multimedia Interface, and the HDMI Logo are trademarks or registered trademarks of HDMI Licensing Administrator, Inc. All other brand names and product names may be trademarks or registered trademarks of their respective owners. Design and specifications are subject to change without prior notice. All screen images appearing in this brochure are simulated.



# SHARP

**8M-B70AU**  
Professional LCD Monitor

Be Original.

The Overwhelming Realism of 8K on a 70" Class Display



**8K**  
7680 × 4320 Pixels

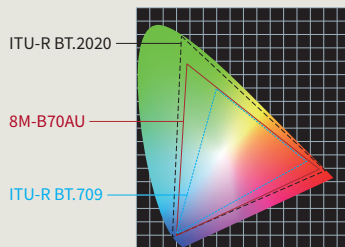


## 8K high-resolution LCD panel

Thanks to the 33 million pixels packed into its 7,680 x 4,320-pixel resolution panel, this 70" Class (69.5" diagonal) monitor achieves screen resolution 16 times higher than Full-HD. You can't help but feel the depth and presence of the stunningly realistic on-screen images.

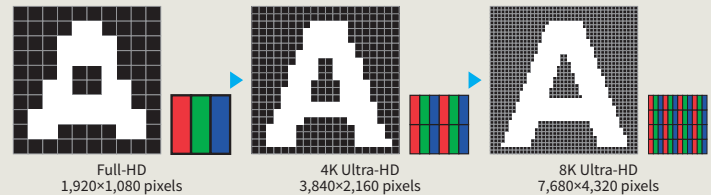
## Images come to life in vivid color

Sophisticated color-processing technologies support a wide range of color expression along with faithful color mapping on the display. The rich color palette of an 8K monitor adds depth to content and brings the entire screen to life.



## Superb image quality via 8K upscaling

Thanks to Sharp's on-board processing technology, 4K Ultra-HD and Full-HD content can be upscaled to 8K resolution. Your slideshows, videos, images, and text can be rendered with a new level of breathtaking detail and realism.



## Other features

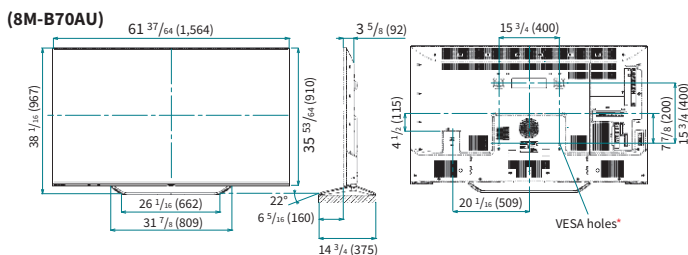
- HDR (High Dynamic Range) compatible (HLG/PQ)
- Mega contrast (dynamic range expansion) technology

## Specifications

Model Name	8M-B70AU
Installation	Landscape
LCD Panel	70" Class (69.5" diagonal) TFT LCD
Max. Resolution	7,680 x 4,320 pixels
Max. Display Colors (approx.)	1.07 billion colors
Pixel Pitch (H x V)	0.2004 x 0.2004 mm
Brightness*1	400 cd/m <sup>2</sup> (Peak brightness: 1,000 cd/m <sup>2</sup> )
Contrast Ratio	3,000:1
Viewing Angle (H/V)	176°/176° (CR ≥ 10)
Active Screen Area (W x H)	61 1/2 x 36 1/2"
Response Time	8 ms
Backlight	LED, direct lit
Computer Input	Video
Plug & Play	VESA DDC2B
Video Color System	PAL-BGDKI/PAL-N/PAL-M/PAL-60/SECAM/NTSC-M
Input Terminals*2	HDMI (for 8K)*3: (HDCP2.2 compatible, 4K60P, ITU-R BT.2020 compatible, HDR compatible) x 4 HDMI (for 4K/2K): (HDCP2.2 compatible, 4K60P, ITU-R BT.2020 compatible, HDR compatible) x 1, (HDCP2.2 compatible, ARC compatible) x 1, (HDCP2.2 compatible) x 2 PC analog: Mini D-sub 15-pin x 1, RCA pin (audio/video) x 1*4, USB (photo, music, video) x 2
Output Terminals*2	Digital audio output (optical) x 1, 3.5mm-diameter stereo mini jack x 2
Input/Output Terminals*2	LAN port (10Base-T/100Base-TX) x 1
Speaker Output	35 W (10 W+10 W+15 W subwoofer)
Power Supply	120V AC, 60Hz
Power Consumption	445 W (during standby: 0.5 W)
Operating Temperature	0°C to 35°C
Dimensions (W x D x H) (approx.) (display only)	61 37/64" x 3 5/8" x 35 53/64"
Weight (approx.) (display only)	93.7 lbs

\*1 Brightness depends on input mode and other picture settings. Brightness level will decrease slightly over the lifetime of the product. Due to the physical limitations of the equipment, it is not possible to maintain a precisely constant level of brightness. \*2 Use a commercially available connection cable for PC and other video connections. \*3 8K requires HDMI x 4 \*4 Audio and video are shared

## Dimensions



Units: inch (mm)

\* To use the VESA-standard mounting bracket, use M6 screws that are 8 to 10 mm plus the thickness of the bracket.

**HDMI**  
HIGH-DEFINITION MULTIMEDIA INTERFACE

**SHARP**

SHARP ELECTRONICS CORPORATION  
100 Paragon Drive, Montvale, NJ 07645  
1-800-BE-SHARP • www.sharpsusa.com

Sharp is a registered trademark of Sharp Corporation. The terms HDMI and HDMI High-Definition Multimedia Interface, and the HDMI Logo are trademarks or registered trademarks of HDMI Licensing Administrator, Inc. in the United States and other countries. All other brand names and product names may be trademarks or registered trademarks of their respective owners. All screen images appearing in this brochure are simulated. Design and specifications are subject to change without prior notice.