

WIREMOLD®
EVOLUTION™ SERIES POKE-THRU DEVICES

THE POWER TO EVOLVE



 **legrand®**

EVOLVING FOR THE FUTURE

Poke-thru devices are an industry standard, but they're often limited to certain areas. Not anymore. Evolution Poke-Thru Devices can be installed throughout a building, no matter where you need them. With versatility like never before, choose from a wide range of options that bring connections to the floor—and evolve with the future.



EVOLVING ENVIRONMENTS

It used to be hard to bring connections to challenging environments, like places with a lot of foot traffic or frequently moving equipment. Cover finishes couldn't stand up over time, showing signs of wear after just a few years. Nothing ruins an interior design quite like a scuffed, scratched or broken cover for floor activations. Because it's generally right in the middle of a floor, eyes are drawn right to it.

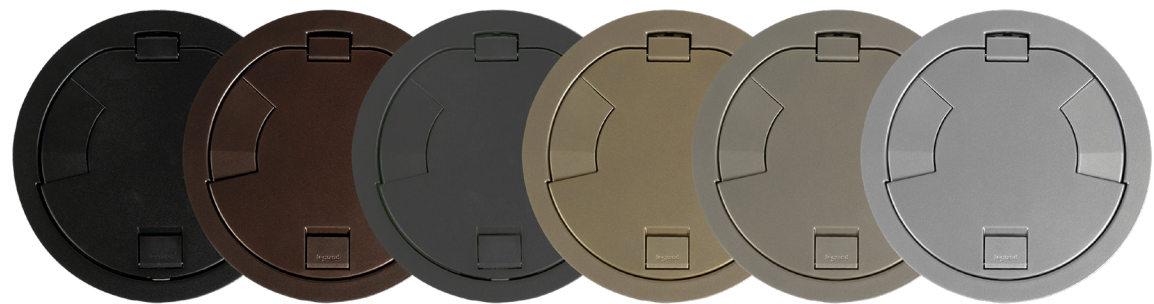
But we've got you covered. Keep the same Evolution Poke-Thru Device throughout the building. Simply mix-and-match your cover finishes for optimal protection in each environment.



THREE COVERS. **MULTIPLE FINISHES.**

1 POWDER COAT

- Perfect for areas with light foot traffic or when placed under furniture



Black Bronze Gray Brass Nickel Aluminum

2 DURABLE FINISHES

- Perfect for areas with high foot traffic or projects with attention to aesthetics
- Lasts 4x longer than standard powder coat finishes and 3x longer than industry standard finishes



Satin Brass Satin Nickel Brushed Aluminum

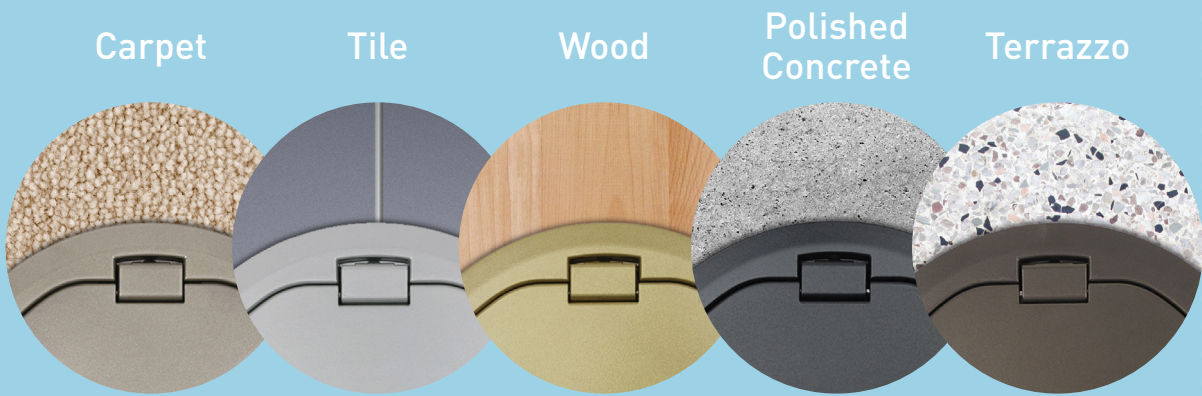
3 HEAVY-DUTY

- Tested to a load rating of 8,000 lbs. with 1.5 factor of safety
- Naturally resistant to chemicals and corrosion from harsh cleaning solutions
- Perfect for areas that will see significant rolling loads or abrasive cleaners



Brass Stainless Steel

ONE DEVICE. **ANY FLOOR COVERING.**



Carpet Tile Wood Polished Concrete Terrazzo

IDEAL FOR **MANY APPLICATIONS**

Open offices
Conference rooms
Lecture halls
Common areas
Exhibition halls
Lobbies and atriums



EVOLVING DEVICES

Many of your customers need a variety of A/V devices and connections, and they're concerned about the proper fit. Evolution Poke-Thru Devices accept a number of them and are designed with enough depth behind the device face for larger cables to sweep in gradually—not twist, bend or coil. Because they're recessed below floor level, connections are kept safe.

POWER

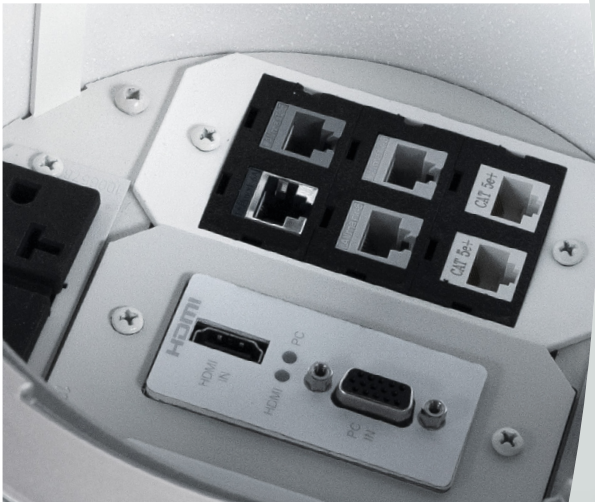
- Add receptacles with GFCI protection, plug load control or USB ports

COMMUNICATIONS

- Accepts industry standard communications devices

A/V

- Enough space for active A/V transmitters and larger connection points
- Accepts devices from leading manufacturers like Extron®, Crestron® and even Legrand AVIP



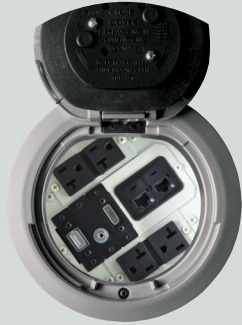
EVOLVING CAPACITY

No matter what capacity you need, there's an option. From small 2-gang solutions that fit perfectly in huddle spaces to large 8-gang solutions that make future changes easier than ever, you can specify Evolution Poke-Thru Devices anywhere connections are needed.



4" DEVICE

Perfectly sized with 2-gangs for smaller capacity needs



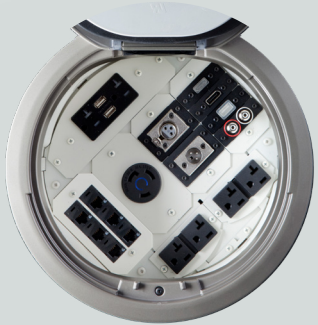
6" DEVICE

Recessed poke-thru device with 3-gangs of capacity for future expansion and configurability



8" DEVICE

Large capacity dual service recessed poke-thru device with 5-gangs



10" DEVICE

An industry first with 8-gangs of capacity

MATCH THE FIRE RATING OF YOUR FLOOR

With options for either 2-hour or 3-hour (available in 6AT only) fire-rated devices, you can pick the right poke-thru for your application. The devices utilize an intumescent material that swells when exposed to heat, increasing in volume to seal off the passage of flames for the same amount of time as the fire rated floor assembly.



WWW.LEGRAND.US/EVOLUTIONPOKETHRU

designed to be better.™



Electrical Wiring Systems

60 Woodlawn Street
West Hartford, CT 06110
1.877.BY.LEGRAND (295.3472)
www.legrand.us

Canada
1.800.723.5175; 905.738.9195
www.legrand.ca

Costa Rica
+506.298.56.04; +506.239.71.13
www.legrand.crv

FOLLOW US



©2020 Legrand All Rights Reserved BR3053R1 02/20