

IntelliSHOT

Auto-Tracking Camera

VADDIO'S NEXT-GENERATION MOTION TRACKING CAMERA

The IntelliSHOT® auto-tracking camera makes video collaboration and streaming classes easy and effortless. Equipped with advanced IntelliFrame technology, the IntelliSHOT ePTZ camera is the only autoframing device that can be adjusted based on the room conditions and user's preferences.

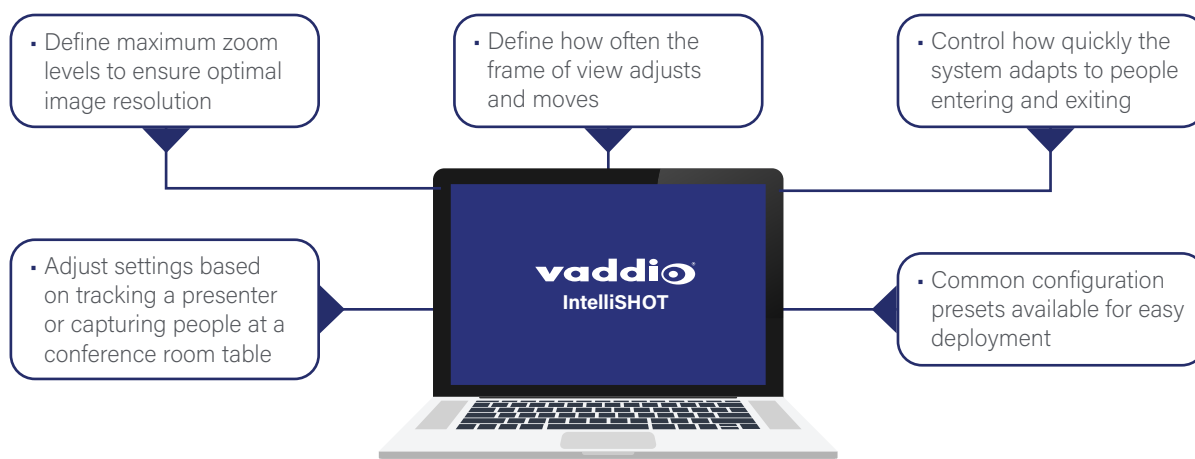
- Advanced Intelligent Framing algorithms keep your participants in view
- 30x zoom with 70.2 degree field of view
- Simultaneous USB 3.0, HDMI and H.264 IP Streaming (RTSP or RTMP)
- Two integrated beamforming microphones with built-in Acoustic Echo Cancellation (AEC)
- Balanced audio line in and out



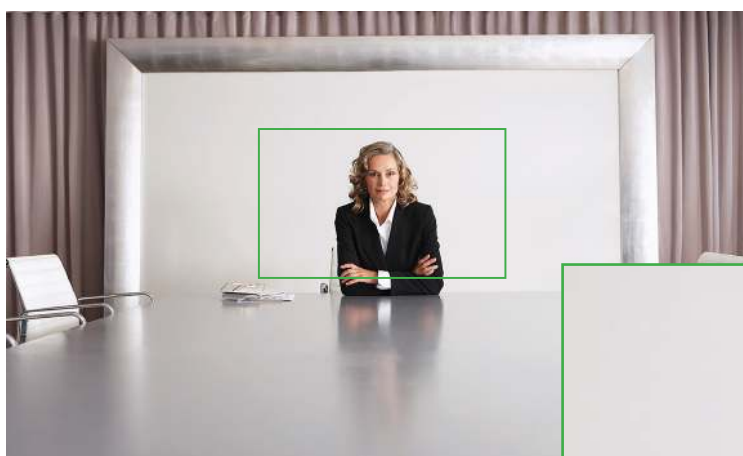
CONTROL AUTO-FRAMING, ZOOM LEVELS AND MORE

CUSTOMIZABLE FRAMING EXPERIENCE

AV Integrators can now promise personalized video performance with every installation. Because IntelliFrame is adjusted via the web interface, it can be fine-tuned remotely by support staff. The following are a few of the basic parameters with several more advanced controls available.



We know there are situations where a user wants full control of the room and so we made it easy to override IntelliFrame by simply steering the camera with the provided remote.



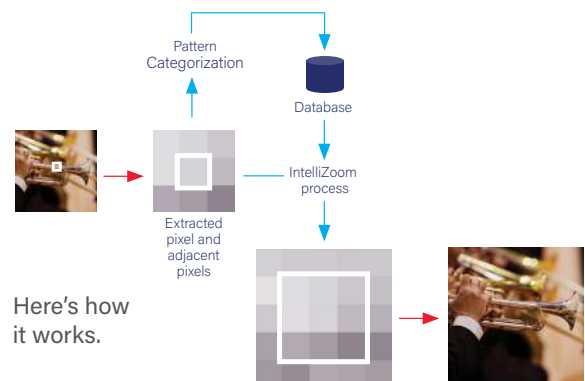
Vaddio's IntelliFrame technology has auto-framing algorithms that keep your participants in view with a 70.2 degree field of view and a 30x zoom with exceptional image quality

SMOOTH, STUNNING VIDEO

INTELLIZOOM™ IMAGE PROCESSING

IntelliSHOT provides a 30x zoom—a 20x optical zoom plus an additional 10x zoom using IntelliZoom Image Processing Technology. IntelliZoom adds digital zoom without compromising image resolution quality.

Most digital zooms use electronic cropping to get closer to the subject, resulting in fuzzy images. The powerful processor inside IntelliSHOT compares patterns found in adjacent pixels and creates new pixels to match selected patterns, resulting in more realistic, higher-quality images.



ENHANCED WIDE DYNAMIC RANGE (WDR)

With its back-illuminated Exmor R CMOS image sensor, IntelliSHOT offers more powerful image signal processing (ISP)—resulting in better light-gathering capabilities, incredible contrast and sharp HD video, even in dim lighting conditions. Enhanced WDR helps correct for environments with uneven lighting by making darker or over-bright areas in the video more visible and detailed. With the IntelliSHOT, you get brilliant images in settings where the lighting is extremely varied such as church sanctuaries or outdoor live events. The WDR can be turned off and on via the web-based user interface or through serial commands.



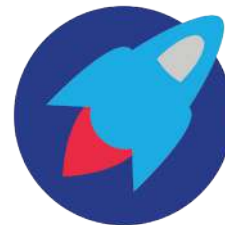
SILKY-SMOOTH VIDEO

We know the best presenters don't stand perfectly still while engaging with an audience, and with lower quality video cameras, people on the far end of a stream may experience jerky and erratic video. The IntelliSHOT delivers full 1080p high-definition video at high frame rates. It adjusts between presets panning, tilting, and zooming (PTZ) simultaneously for lifelike, professional video results.



FLEXIBLE MOUNTING OPTIONS

IntelliSHOT can be inverted and mounted above or below a display for a sleek look. IntelliSHOT ships with a custom steel on-wall mount. Additional mounting options compatible with height adjustable displays are available from Chief.



REMOTE MANAGEMENT

IntelliSHOT is PoE+ powered and features an intuitive browser-based user interface. The free Vaddio Deployment Tool application can be used for remote management, firmware updates, camera and streaming status, rebooting and more.

AUTO-TRACKING FOR ANY SPACE

CORPORATE

With the IntelliSHOT Auto-Tracking camera, video conferencing meetings can have an even greater impact on productivity and the bottom line. With auto-framing that can pan, tilt, and zoom to keep participants in view you can focus on the business at hand.



EDUCATION

Whether it's lecture capture, live streaming or zooming in nice and close so students can view complicated techniques on a large classroom monitor, IntelliSHOT enhances learning in the modern classroom. Instructors aren't bound to their laptop and can freely move from the podium to the whiteboard while IntelliFrame keeps them in view.



ENTERTAINMENT

When deploying the IntelliSHOT in an auditorium or theater as a wide shot, the 30x zoom and superior image quality ensure every moment is captured beautifully. Enhanced WDR compensates for bright windows and dark corners while Spotlight Compensation Mode adjusts for the presence of high intensity spotlights seen in performance halls and live event venues, IntelliSHOT provides fantastic high definition footage with built-in live streaming capabilities for recording performances, special events, ceremonies and more.



TRAINING

Make training sessions more effective no matter where participants are located with a camera that intelligently captures demonstrations and keeps attendees highly engaged with the instructor. Intelligent auto-tracking allows instructors to move around naturally and focus on delivering the lesson at hand.



INTELLISHOT AUTO-TRACKING CAMERA

PORTS AND CONNECTIVITY



IntelliSHOT is PoE+ powered with Ethernet network connectivity. Simultaneous HDMI and USB connections allow the IntelliSHOT to be mounted in the back of a room above or below a display—transforming that display into a confidence monitor showing what the camera is capturing via its HDMI output. With the USB 3.0 connection, the camera can be connected to a PC-based recording software or pulled up as the camera and microphone for a Zoom, Teams or Google Meet session. Like other Vaddio USB products, the IntelliSHOT is truly plug and play without special drivers to download, perfect for bring-your-own-device (BYOD) meeting spaces. The balanced audio I/O allows for simple integration with 3rd party audio systems.

ORDERING INFORMATION

Black

999-21100-000 (North America)

999-21100-001 (Europe/UK)

999-21100-009 (Australia/New Zealand)

White

999-21100-000W (North America)

999-21100-001W (Europe/UK)

999-21100-009W (Australia/New Zealand)

WHAT'S IN THE BOX

- IntelliSHOT ePTZ Camera (black or white)
- On-wall mount and hardware (black or white)
- Cable cover (black or white)
- 6 ft (1.8m) USB 3.0 cable, type A to B
- PoE+ power injector
- Vaddio RF Remote
- 3.3 ft (1m) Cat-5e cable
- Quick-Start Guide



LEGRAND | AV COMMERCIAL BRANDS

C2G | Chief | Da-Lite | Luxul | Middle Atlantic | Vaddio | Wiremold

THE ART OF EASY | legrandav.com

USA 800.572.2011 avvaddio.support@legrand.com EMEA +31 495 580 840 avemea.sales@legrand.com APAC +852 2145 4099 av.asia.sales@legrand.com

©2021 Legrand AV Inc. 210206 Rev A 4/21 Vaddio is a registered trademark of Legrand AV Inc. All other brand names or marks are used for identification purposes and are trademarks of their respective owners. All patents are protected under existing designations. Other patents pending.