



## XMS Cloud

Monitoring, management and analytics for your workplace

The XMS Cloud Management Platform offers the ultimate solution for IT managers deploying or owning a large install base of ClickShare Present and/or ClickShare Conference devices. It provides an easy-to-use interface for remote and reliable device management and brings useful analytics to drive the Digital Workplace

### Drive your employees' meeting productivity, increase your ROI

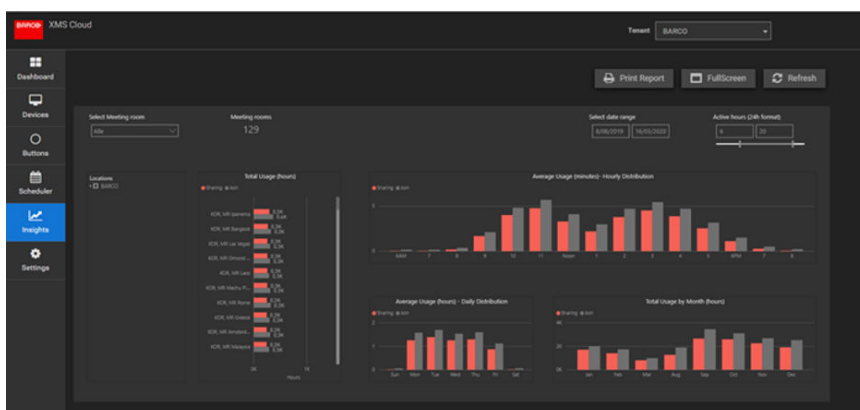
Driving the Digital Workplace can be boosted, provided you have access to the right data: insights on workspace occupancy and remote collaboration, adoption of collaboration experiences like touch functionalities and BYOD. XMS Cloud Management Platform provides a personalized view on availability and utilization of all your Base Units and thus meeting spaces. This information is essential to make data-driven decisions for optimizing your workspace capacity.

### Be in control, everywhere & from anywhere

The challenge to easily maintain, manage and monitor your ClickShare devices remotely is perfectly addressed by Barco's XMS Management Platform. The XMS platform offers a number of management solutions for different use cases with XMS Cloud and XMS (Virtual) Edge.

ClickShare's wireless conferencing devices (CX-20, CX-30 and CX-50) can be accessed directly from within XMS Cloud and wireless presentation devices (C-5, C10)

- **The XMS Virtual Edge**, a free software download in the form of an OVA file can act as a gateway.



# ClickShare

IT or facility managers can easily deploy the XMS Virtual Edge onto a local server and use this as gateway to the XMS Cloud management platform.

In case device management via the XMS Cloud solution is not possible or preferred, there is the option to use XMS Virtual Edge as local, on-premise management node. However, only a subset of functionalities is available for this on-premise deployment.

Corporate data and insights contain sensitive, private elements and should be secured and protected at all times. Therefore, the XMS Cloud Management Platform has been designed with security as a top priority throughout its full lifetime. Extensive threat modelling, setting security baseline requirements, vulnerability management and penetration testing all contribute in making XMS a highly secure solution for remote device management.

## Security and privacy by design

| Functionality overview  | XMS Cloud   | XMS Virtual Edge |
|---|-------------|------------------|
| Smooth integration of ClickShare units into the company network           | ✓           | ✓                |
| Easy onboarding and remote management of ClickShare Conference units      | ✓           | ✓                |
| Health & status monitoring  | ✓           | ✓                |
| Scheduling of software updates and reboots                                | ✓           | ✓                |
| Easy configuration cloning between units via device templates             | ✓           | ✓                |
| Remote wallpaper installation   | ✓           | ✓                |
| User access and role management   | ✓           | ✓                |
| Enterprise-grade security with support for device certificates            | ✓           | ✓                |
| ISO 27001 certified   | Coming soon | Coming soon      |
| Secured Cloud access from anywhere  | ✓           |                  |
| Dashboard & notifications   | ✓           |                  |
| Multi-site or multi-customer overview                                     | ✓           |                  |
| Analytics & Reporting providing insights in the usage of the install base | ✓           |                  |
| Alerts indicating required actions  | Coming soon |                  |

M00000-R00-0620-LF | Last updated: December 2021

The information and data given are typical for the equipment described. However any individual item is subject to change without any notice. The latest version of this brochure can be found on [www.barco.com](http://www.barco.com). All specs mentioned in this brochure are in accordance with ISO 21118 standards.