



CEILING, SURFACE, AND PENDANT

DesignMax Loudspeakers

A complete loudspeaker assortment, DesignMax loudspeakers offer rich lows and clear, intelligible highs — along with premium aesthetics that complement any commercial sound installation. With 15 models to choose from — including coaxial two-way loudspeakers, pendant loudspeakers, subwoofers, outdoor-rated loudspeakers, and compact models for tight spaces — it's easy to create tailored solutions for background and foreground audio applications.

Combine models to complete any design, big or small —

15 loudspeakers to mix and match including pendant loudspeakers, subwoofers, and outdoor-rated options

Deliver rich lows and clear, intelligible highs with coaxial two-way drivers — no DSP or EQ required

Blend with any room design with elegant form factors, minimum-bezel grilles available in black or white, and removable logos

Reduce installation time with the patented QuickHold mounting system, which also reduces strain, hassle, and the chance of product damage



APPLICATIONS

- Retail stores
- Restaurants and bars
- Hospitality venues
- Conference rooms
- Houses of worship
- Performing arts venues



DesignMax DM3P

| | |
|----------------------------|---|
| Frequency Response (-3 dB) | 85 Hz - 20 kHz |
| Frequency Range (-10 dB) | 75 Hz - 20 kHz |
| Coverage | 130° conical |
| Nominal Impedance | 8 Ω |
| Power Handling, Continuous | 30 W |
| Power Handling, Peak | 120 W |
| Max SPL @ 1 m | 99 dB |
| Dimensions (Ø × D) | 207 × 248 mm (8.2 × 9.8 in) |
| Included Accessories | One (1) 4.5 m (15 ft) adjustable suspension cable system, four (4) cable ties |
| Optional Accessories | Threaded rod adapter, conduit adapter, pendant suspension cable pair kit |



DesignMax DM5P

| | |
|----------------------------|---|
| Frequency Response (-3 dB) | 80 Hz - 20 kHz |
| Frequency Range (-10 dB) | 65 Hz - 20 kHz |
| Coverage | 120° conical |
| Nominal Impedance | 8 Ω |
| Power Handling, Continuous | 60 W |
| Power Handling, Peak | 240 W |
| Max SPL @ 1 m | 105 dB |
| Dimensions (Ø × D) | 259 × 300 mm (10.2 × 11.8 in) |
| Included Accessories | One (1) 4.5 m (15 ft) adjustable suspension cable system, four (4) cable ties |
| Optional Accessories | Threaded rod adapter, conduit adapter, pendant suspension cable pair kit |



DesignMax DM6PE

| | |
|----------------------------|---|
| Frequency Response (-3 dB) | 75 Hz - 20 kHz |
| Frequency Range (-10 dB) | 62 Hz - 20 kHz |
| Coverage | 115° conical |
| Nominal Impedance | 8 Ω |
| Power Handling, Continuous | 125 W |
| Power Handling, Peak | 500 W |
| Max SPL @ 1 m | 110 dB |
| Environmental | IP55 outdoor-rated |
| Dimensions (Ø × D) | 308 × 375 mm (12.1 × 14.8 in) |
| Included Accessories | One (1) 4.5 m (15 ft) adjustable suspension cable system, four (4) cable ties |
| Optional Accessories | Threaded rod adapter, conduit adapter, pendant suspension cable pair kit |



DesignMax DM10P-SUB

| | |
|----------------------------|---|
| Frequency Response (-3 dB) | 46 - 108 Hz |
| Frequency Range (-10 dB) | 40 - 125 Hz |
| Nominal Impedance | 8 Ω |
| Power Handling, Continuous | 300 W |
| Power Handling, Peak | 1200 W |
| Max SPL @ 1 m | 110 dB |
| Dimensions (Ø × D) | 400 × 383 mm (15.7 × 15.1 in) |
| Included Accessories | One (1) 4.5 m (15 ft) adjustable suspension cable system, four (4) cable ties |
| Optional Accessories | Threaded rod adapter, conduit adapter, pendant suspension cable pair kit |



DesignMax DM3SE

| | |
|----------------------------|---|
| Frequency Response (-3 dB) | 85 Hz - 20 kHz |
| Frequency Range (-10 dB) | 75 Hz - 20 kHz |
| Coverage | 140° conical |
| Nominal Impedance | 8 Ω |
| Power Handling, Continuous | 30 W |
| Power Handling, Peak | 120 W |
| Max SPL @ 1 m | 101 dB |
| Environmental | IP55 outdoor-rated, included aluminum grille |
| Dimensions (H × W × D) | 232 × 154 × 155 mm (9.1 × 6.1 × 6.1 in) |
| Included Accessories | Wall- and ceiling-mount U-bracket |
| Optional Accessories | Wall-mount pan-and-tilt bracket, Ceiling Mount Bracket S2 |



DesignMax DM5SE

| | |
|----------------------------|---|
| Frequency Response (-3 dB) | 73 Hz - 17 kHz |
| Frequency Range (-10 dB) | 65 Hz - 20 kHz |
| Coverage | 135° conical |
| Nominal Impedance | 8 Ω |
| Power Handling, Continuous | 60 W |
| Power Handling, Peak | 240 W |
| Max SPL @ 1 m | 107 dB |
| Environmental | IP55 outdoor-rated, included aluminum grille |
| Dimensions (H × W × D) | 286 × 192 × 197 mm (11.2 × 7.5 × 7.7 in) |
| Included Accessories | Wall- and ceiling-mount U-bracket |
| Optional Accessories | Wall-mount pan-and-tilt bracket, Ceiling Mount Bracket S2 |



DesignMax DM6SE

| | |
|----------------------------|---|
| Frequency Response (-3 dB) | 70 Hz - 20 kHz |
| Frequency Range (-10 dB) | 59 Hz - 20 kHz |
| Nominal Impedance | 8 Ω |
| Coverage | 130° conical |
| Power Handling, Continuous | 125 W |
| Power Handling, Peak | 500 W |
| Max SPL @ 1 m | 111 dB |
| Environmental | IP55 outdoor-rated, included aluminum grille |
| Dimensions (H × W × D) | 340 × 222 × 229 mm (13.4 × 8.7 × 9.0 in) |
| Included Accessories | Wall- and ceiling-mount U-bracket |
| Optional Accessories | Wall-mount pan-and-tilt bracket, Ceiling Mount Bracket S2 |



DesignMax DM8S

| | |
|----------------------------|---|
| Frequency Response (-3 dB) | 60 Hz - 20 kHz |
| Frequency Range (-10 dB) | 52 Hz - 20 kHz |
| Coverage | 130° conical |
| Nominal Impedance | 8 Ω |
| Power Handling, Continuous | 150 W |
| Power Handling, Peak | 600 W |
| Max SPL @ 1 m | 115 dB |
| Dimensions (H × W × D) | 395 × 249 × 255 mm (15.6 × 9.8 × 10.0 in) |
| Included Accessories | Wall- and ceiling-mount U-bracket |
| Optional Accessories | Wall-mount pan-and-tilt bracket |



DesignMax DM10S-SUB

| | |
|----------------------------|--|
| Frequency Response (-3 dB) | 41 - 108 Hz |
| Frequency Range (-10 dB) | 35 - 125 Hz |
| Coverage | 135° conical |
| Nominal Impedance | 8 Ω |
| Power Handling, Continuous | 300 W |
| Power Handling, Peak | 1200 W |
| Max SPL @ 1 m | 115 dB |
| Dimensions (H × W × D) | 502 × 316 × 323 mm (19.8 × 12.5 × 12.7 in) |
| Included Accessories | Wall- and ceiling-mount U-bracket |



DesignMax DM2C-LP

| | |
|--------------------------------------|--|
| Frequency Response (-3 dB) | 95 Hz - 18 kHz |
| Frequency Range (-10 dB) | 85 Hz - 19 kHz |
| Coverage | 150° conical |
| Nominal Impedance | 16 Ω |
| Power Handling, Continuous | 20 W |
| Power Handling, Peak | 80 W |
| Max SPL @ 1 m | 97 dB |
| Dimensions (Ø × total D × ceiling D) | 198 × 110 × 99 mm (7.8 × 4.3 × 3.9 in) |
| Included Accessories | Tile bridge, hole template |
| Optional Accessories | Rough-in pan pack (for 6 units) |



DesignMax DM3C

| | |
|--------------------------------------|--|
| Frequency Response (-3 dB) | 85 Hz - 19 kHz |
| Frequency Range (-10 dB) | 75 Hz - 20 kHz |
| Coverage | 135° conical |
| Nominal Impedance | 8 Ω |
| Power Handling, Continuous | 30 W |
| Power Handling, Peak | 120 W |
| Max SPL @ 1 m | 98 dB |
| Dimensions (Ø × total D × ceiling D) | 255 × 154 × 144 mm (10.0 × 6.0 × 5.7 in) |
| Included Accessories | Tile bridge, hole template |
| Optional Accessories | Rough-in pan pack (for 6 units) |



DesignMax DM5C

| | |
|--------------------------------------|--|
| Frequency Response (-3 dB) | 73 Hz - 17 kHz |
| Frequency Range (-10 dB) | 65 Hz - 20 kHz |
| Coverage | 130° conical |
| Nominal Impedance | 8 Ω |
| Power Handling, Continuous | 60 W |
| Power Handling, Peak | 240 W |
| Max SPL @ 1 m | 105 dB |
| Dimensions (Ø × total D × ceiling D) | 303 × 205 × 192 mm (11.9 × 8.1 × 7.6 in) |
| Included Accessories | Tile bridge, hole template |
| Optional Accessories | Rough-in pan pack (for 6 units) |



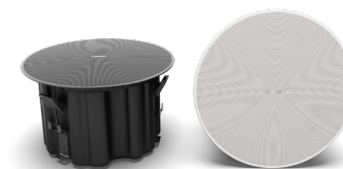
DesignMax DM6C

| | |
|--------------------------------------|--|
| Frequency Response (-3 dB) | 70 Hz - 20 kHz |
| Frequency Range (-10 dB) | 59 Hz - 20 kHz |
| Coverage | 120° conical |
| Nominal Impedance | 8 Ω |
| Power Handling, Continuous | 125 W |
| Power Handling, Peak | 500 W |
| Max SPL @ 1 m | 109 dB |
| Dimensions (Ø × total D × ceiling D) | 356 × 239 × 223 mm (14.0 × 9.4 × 8.8 in) |
| Included Accessories | Tile bridge, hole template |
| Optional Accessories | Rough-in pan pack (for 6 units) |



DesignMax DM8C

| | |
|--------------------------------------|---|
| Frequency Response (-3 dB) | 60 Hz - 20 kHz |
| Frequency Range (-10 dB) | 52 Hz - 20 kHz |
| Coverage | 135° conical |
| Nominal Impedance | 8 Ω |
| Power Handling, Continuous | 150 W |
| Power Handling, Peak | 600 W |
| Max SPL @ 1 m | 113 dB |
| Dimensions (Ø × total D × ceiling D) | 409 × 255 × 240 mm (16.1 × 10.0 × 9.4 in) |
| Included Accessories | Tile bridge, hole template |
| Optional Accessories | Rough-in pan pack (for 6 units) |



DesignMax DM8C-SUB

| | |
|--------------------------------------|---|
| Frequency Response (-3 dB) | 45 - 117 Hz |
| Frequency Range (-10 dB) | 38 - 155 Hz |
| Nominal Impedance | 8 Ω |
| Power Handling, Continuous | 180 W |
| Power Handling, Peak | 720 W |
| Max SPL @ 1 m | 112 dB |
| Dimensions (Ø × total D × ceiling D) | 409 × 255 × 240 mm (16.1 × 10.0 × 9.4 in) |
| Included Accessories | Tile bridge, hole template |
| Optional Accessories | Rough-in pan pack (for 6 units) |