

## POOR AUDIO MANGLES MEETINGS.

The garbled, frustrating, productivity-robbing video conference has been around too long. And everyone feels it.

# 7 OUT OF 10

MEETINGS  
are already virtual.

# 3X

MORE IMPORTANT  
Audio quality is 3 times more important  
in large rooms than in the home office.

# 81%

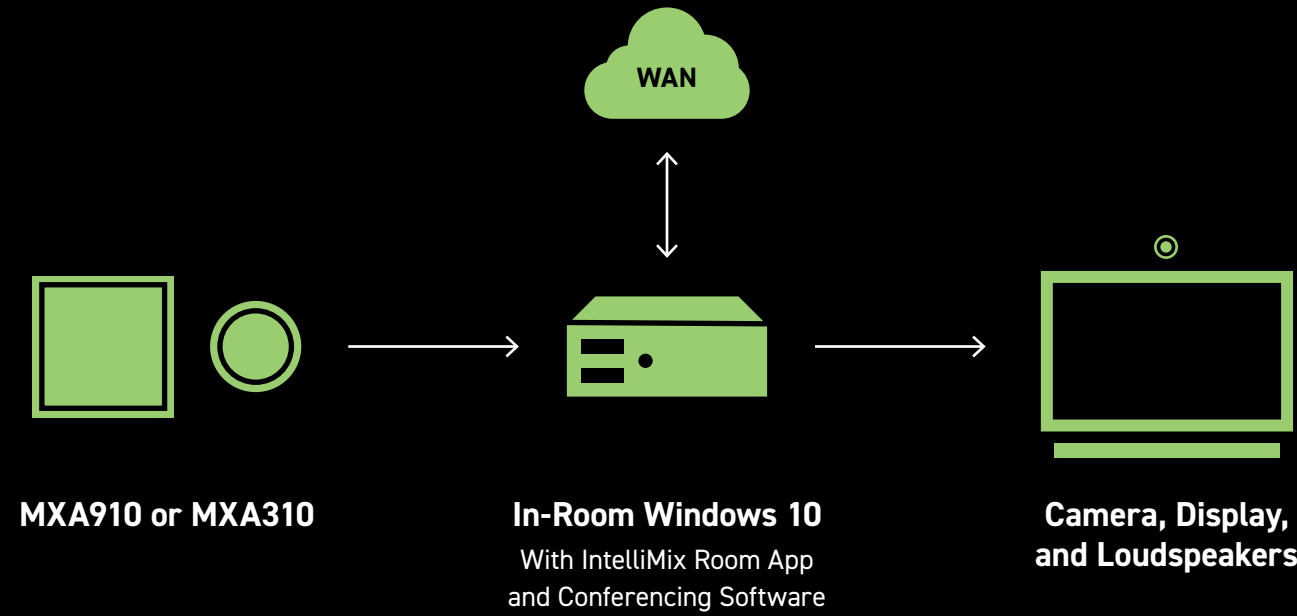
OF EMPLOYEES  
believe better sound would  
dramatically improve meetings.

# 4 OUT OF 5

VIRTUAL MEETING  
FRUSTRATIONS  
are audio issues.

## MAKE SIMPLE THE NEW STANDARD.

Now all it takes to optimize audio is award-winning Shure MXA mics and a PC running a conferencing application and IntelliMix® Room.



### System requirements

#### Processor:

- Intel (64 bit)
- 8th generation Core i5 or better
- 2.2 GHz or better
- 4 physical cores or better
- 6 threads (logical processors) or better
- AVX2 instruction set

**Memory:** 8 GB RAM

**Storage:** Solid State Drive (SSD) required

**Machine type:** Physical (no virtual machines)

#### Operating System (64 bit):

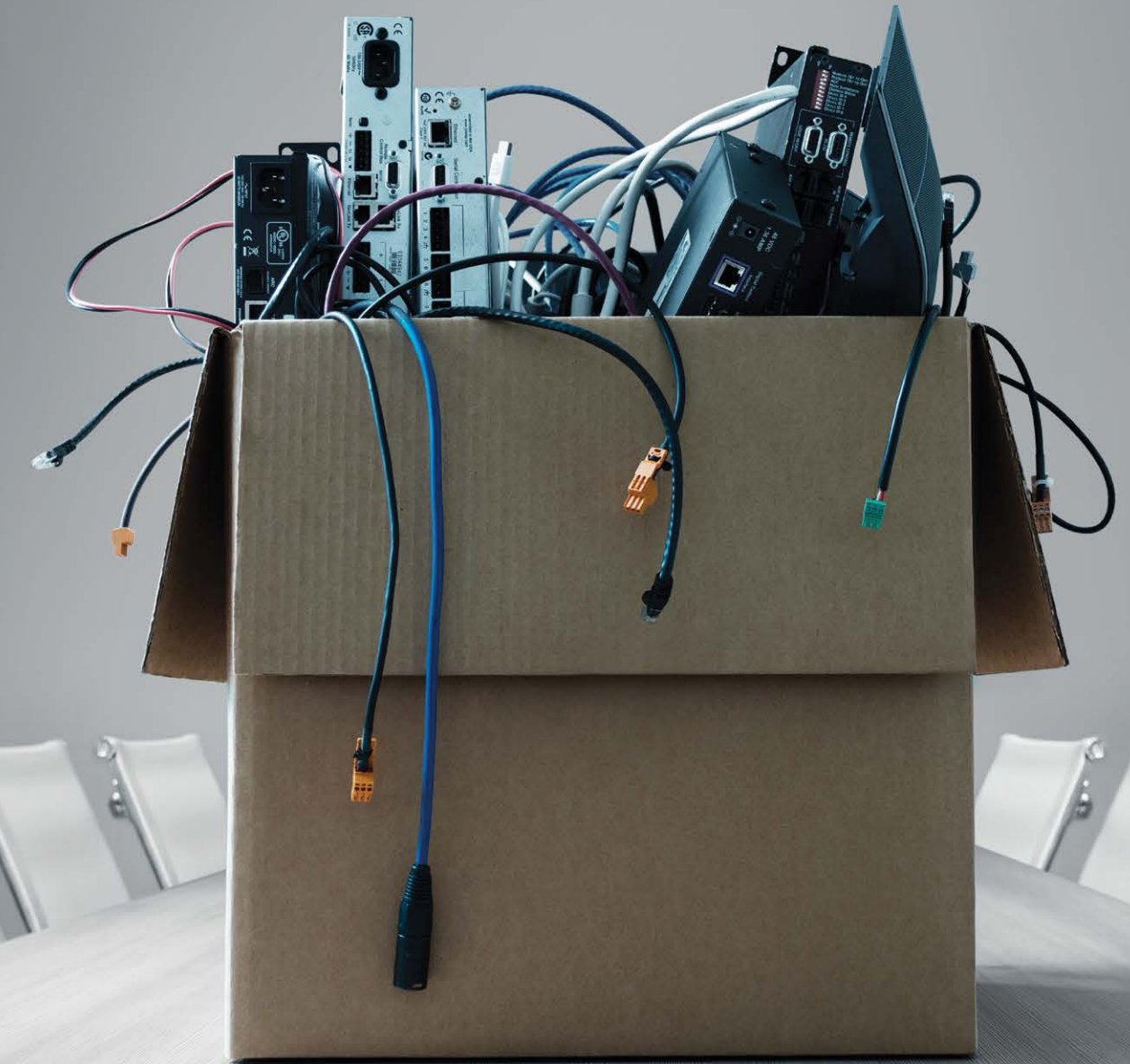
- Windows 10 Pro
- Windows 10 Pro Education
- Windows 10 Education
- Windows 10 IoT
- Windows 10 Enterprise IoT

**Internet Connection:** Required for initial license activation

For more information visit [Shure.com/IMXroom](https://Shure.com/IMXroom)

# SHURE

## THE LAST BOX YOU'LL NEED FOR DSP.



INTELLIMIX® ROOM

# SHURE

©2021 Shure Incorporated.  
SHURE and the SHURE logotype are registered trademarks of Shure Incorporated or Shure Acquisitions Holdings, Inc. For additional information see [shure.com/trademarks](https://shure.com/trademarks). All product and company names are trademarks™ or registered® trademarks of their respective holders.

Source: AV Thought Leadership Resource, Illuminas, October 2019

## IT'S TIME FOR A DIFFERENT DSP.

### Hardware makes things harder.

You know the challenges: Complex installations. Custom setups. Convoluted architecture. Difficult to troubleshoot. Impossible to replicate. And yes, time consuming.

### Rising to the AV demand.

The pace of corporate consults, installs, and maintenance is going to have to get faster. Integrators need a way to take the complexity out of setup and put time back on your side.

# AV that speaks IT.

Introducing IntelliMix® Room, the first audio processing software fully optimized for Shure conferencing microphones. Simply download and deploy to in-room Windows 10 devices, and bring conferencing into the future. No custom setups or special hardware needed to enjoy crystal-clear audio on all video conference calls.

### Not just for boardrooms anymore.

With reduced hardware costs and faster set-up time, A/V budgets get more space to install high-quality audio in more meeting rooms. Now everywhere from the huddle to C-suite conference rooms can have clear sound.

### Getting over old hang-ups.

This is the next big step forward for conferencing. Decades of Shure audio expertise now brings unparalleled sound to every discussion. Finally, AV works with IT, throughout the whole enterprise, with the click of a button.



## DSP THAT'S OMG.

Ready to transform every meeting by delivering exceptional audio campus-wide, everyone will hear the difference in virtually no time at all.



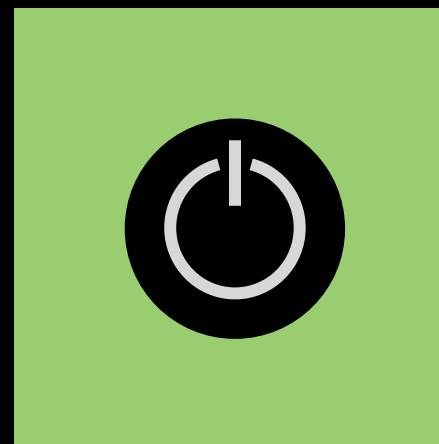
### The hardware's already there.

IntelliMix® Room effectively turns the in-room PC into a Shure device. All configuration is managed in our Designer software and replicable through easy-to-use templates.



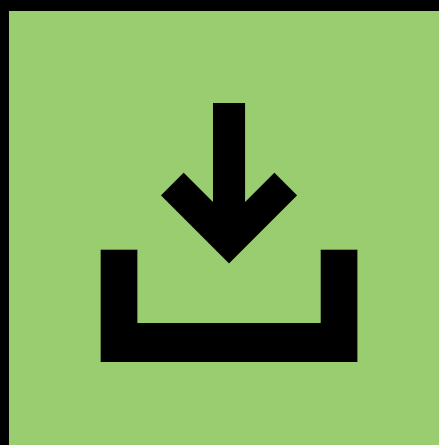
### Dante onboard.

Once the PC has IntelliMix Room onboard, it has Dante audio networking too. No other software license is needed to route audio to or from that PC.



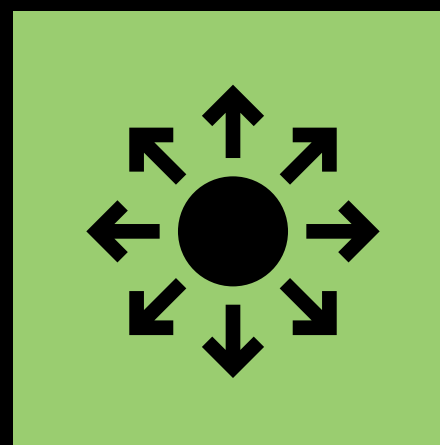
### Always standing by.

Running in the background of Windows, the software restarts automatically, even if the PC loses power or has to reboot after updates.



### No complicated audio routing.

IntelliMix Room installs with its own audio driver. Once selected from the Audio Device dropdown in the Soft Codec of choice, the client is ready to talk.



### Enterprise-wide licensing.

A centrally managed license lets clients easily and effectively deploy the software through their global corporate network.



### Put a stop to eavesdrop.

All connected Shure devices feature Shure Network Audio Encryption, so the only ones to hear it are the ones on the call.

## LESS HARDWARE MEANS MORE CLARITY IN MORE PLACES.

By reducing equipment needs, IntelliMix® Room gives corporate budgets the latitude to outfit additional spaces with award-winning Shure Microflex Advance microphones.

