

Wayfinding Solutions



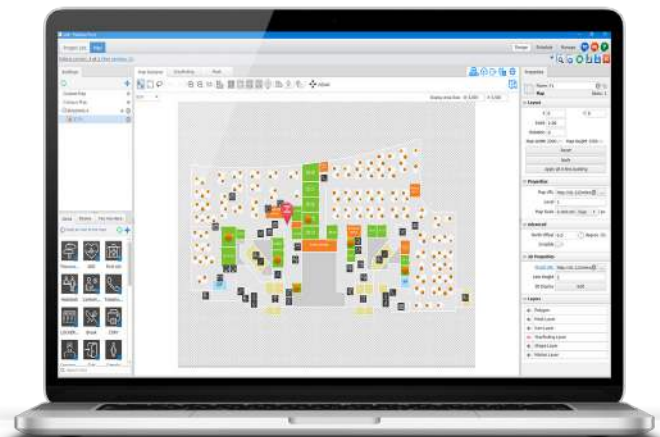
Challenges

An effective wayfinding system requires careful planning and design. This includes understanding the users' needs, the facility's layout, and the resources available for implementation. Maintaining consistency in the design and placement of wayfinding elements throughout a facility can be challenging. Wayfinding elements require ongoing maintenance to ensure they remain legible, visible, and up-to-date. Implementing and managing a wayfinding system can be expensive, requiring careful budgeting to ensure the system is effective and sustainable over the long term. Collecting user feedback is essential for identifying areas for improvement. However, collecting and analyzing feedback can be challenging, particularly in busy or high-traffic environments. Another technology evolves, new opportunities and challenges arise for wayfinding systems. This requires ongoing evaluation and adaptation of the system to ensure it remains effective and up-to-date.

How 22Miles Solves Them

Our 22Miles CMS is equipped with best-in-class wayfinding technology to connect with and help visitors get through your facility from the moment they enter the door. Wayfinding quickly orients visitors with interactive 3D maps featuring easy-to-follow animated arrows, support for ADA-accessible routing, and intelligent pathway algorithms that react to building usage. Wayfinding can integrate with existing hardware and software APIs to create deeply integrated facility experiences for visitors, customers, staff, patients, or students.

The all-in-one platform of 22Miles Publisher Pro uses a unified backend that enables operators to access and make customizations easily. No specialized programming or code training is needed when updating wayfinding digital signs, kiosks, or mobile devices. Also, wayfinding is easy to launch because our team offers white glove, turn-key services. After wayfinding deployment, you can update and change floor plans, layouts, routing, and more.



Interactive 3D Wayfinding Features

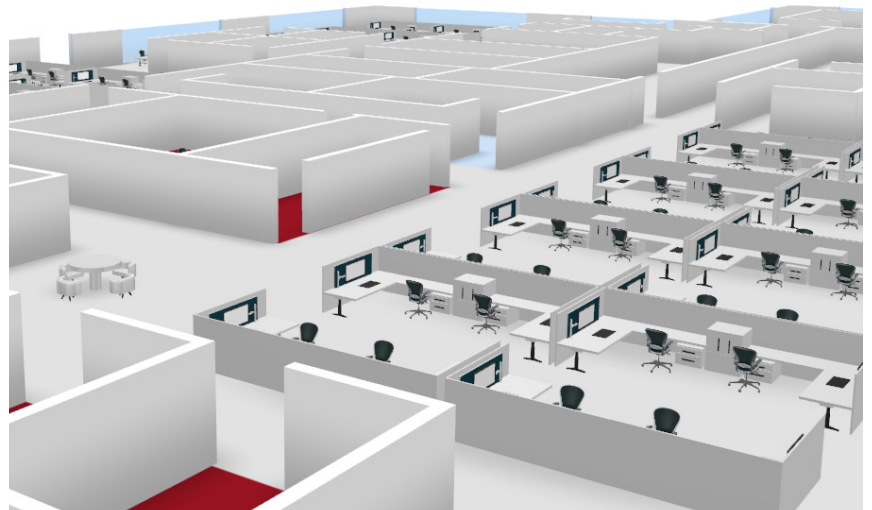
Directional Assistance - Help visitors locate their desired destination via interactive directions and maps of each floor.

Enhance Navigation - Include informative augmented reality (AR) overlays on mobile devices to make it easy for visitors to find where they are going.

Guides in Real-time - Integrate with bluetooth low energy (BLE) positioning systems for blue-dot navigation.

Address ADA Accessibility - Offer display toggles for ADA routes, movable screen controls for easy access, screen magnification capabilities, and options to read screen text aloud for the visually impaired.

Mobile Wayfinding - Generate a browser-based interactive 3D-map through our HTML5 API – or, create a feature-rich native wayfinding app with our SDK.



Feature 3D Details - Kiosks, native iOS/Android apps, and our SDK plug-in can include 3D objects such as desks, chairs, stairs, and other assets for a wayfinding experience that's more real to life

AR and Beacons - Detect indoor locations in real-time using BLE beacons, geomagnetic positioning, or our proprietary AR image recognition technology.

Map Optimization - Our team can import CAD files and generate an immersive 3D wayfinding solution.

Map Editing Tools - Use pick-and-click controls to manage and edit rooms, nodes, and your custom map property settings.

Benefits of using 22Miles

Facility wayfinding helps people navigate complex environments such as hospitals, airports, sports arenas, and office buildings. They are essential for guiding visitors, which reduces stress and anxiety and improves their overall experience. Typically wayfinding uses a conglomerate of signs, maps, and digital displays to direct visitors to their desired destination in a visually appealing and easy-to-follow way. Wayfinding is quickly becoming a standard part of facility digital ecosystems in various industries, from retail to healthcare to higher education.